

Elisha Phamily Cookout



Sunday
August 31, 2008
3-10 pm
Maple Ridge Lodge
Mt. Airy Forest



Elisha Lodge No. 106

*c/o Bob Hadley, Jr.
PO Box 46763
Cincinnati, OH 45246*

*phone (513)307-5020
www.elisha106.org*





*Jump start your Labor Day festivities by joining
Elisha Lodge No. 106 & Elisha Chapter No. 89*

at

***Maple Ridge Lodge in Mt. Airy Forest**
for an afternoon of family, food, and fun!*



Good Eats

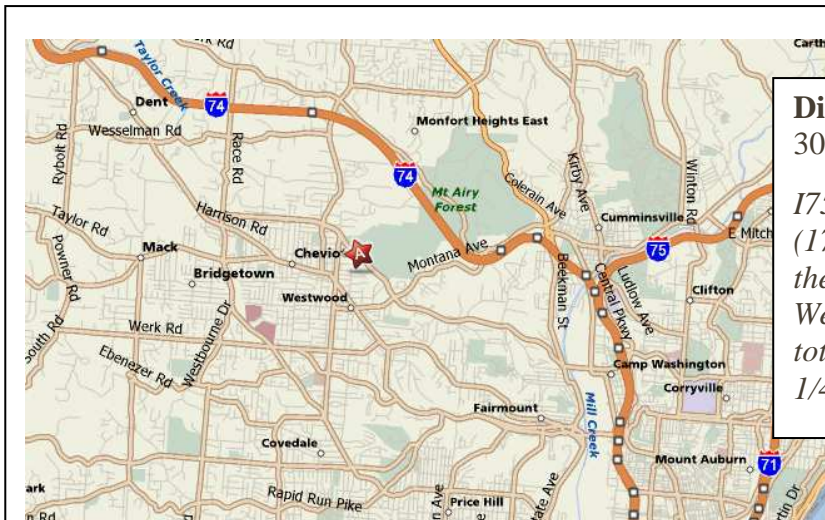
*BBQ Ribs, Chicken, Baked Beans,
Coleslaw, Potatoe Salad, and other
delicious dishes and desserts.*

Fun & Games

*Live DJ ▪ Cornhole ▪ Volleyball
Cards ▪ Horseshoes ▪ Softball ▪
Dominos ▪ Jungle Gym for the kids*

Voter Information

*This year's presidential election is an
exceptional turning point in our
country's history. Make sure you are
registered and know your polling
place. Additional election
information will be available.
Every Vote Counts!*



Directions:

3040 Westwood Northern Blvd, 45211

*I75 to I74 West. Take the Montana Exit
(17) and turn left onto Montana Ave. At
the second light, turn right onto
Westwood-Northern Blvd. The entrance
to the lodge is on the right after about
1/4 mile*